

58 Knowlys Road, Heysham, Morecambe, LA3 2PG



£500,000

An imposing Victorian semi-detached villa with up to six double bedrooms, sitting just across the road from the sea with breathtaking views across the bay and the historic St Peter's Church. It's no surprise that this view once inspired the famous artist J.M.W. Turner; such is the beauty of the sweeping seascape, framed by the distant Cumberland mountains. With its ever-changing tides and glorious sunsets, this home offers a truly unique coastal backdrop.

From the moment you step through the elegant hallway, the character and charm of this Victorian home immediately draw you in. The home has been meticulously maintained to a very high standard, with a wealth of period features, high ceilings and spacious rooms that effortlessly combine elegance with warmth.

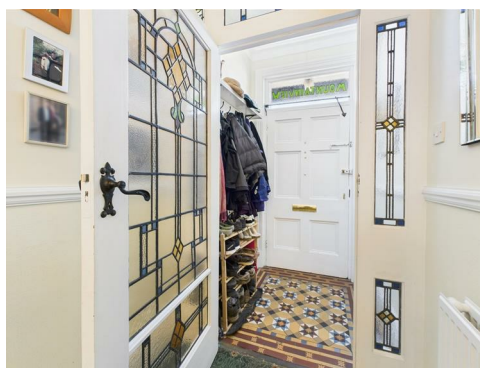
The lounge is perfectly positioned to capture those stunning sea views. A second reception room, currently used as a games room, provides flexible living space, while the utility area and cloakroom enhance the practicality of this thoughtfully designed space. The dining room features a charming multi-fuel stove that creates a warm and inviting atmosphere and flows seamlessly into the lovely kitchen, which is another highlight, filled with an abundance of natural light.

The first floor is home to four generously sized rooms: a bay-windowed sitting room and an adjacent study that both enjoy fabulous sea views, plus two double bedrooms. The first floor boasts four generously proportioned rooms, including a stunning bay-fronted sitting room and an adjoining study both offering breathtaking sea views, alongside two spacious double

bedrooms. A family bathroom, complete with a claw-foot bath, offers a perfect retreat after a long day.

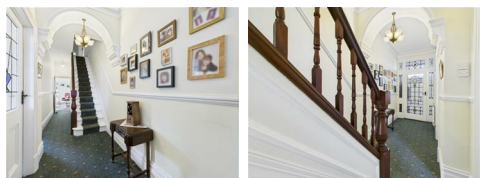
The second floor offers two further spacious bedrooms. Bedroom six is particularly special, with an elevated view over the bay. This room benefits from its own en-suite shower room and a separate door to the hallway, allowing it to be used as a private guest suite if desired.

Entrance Vestibule



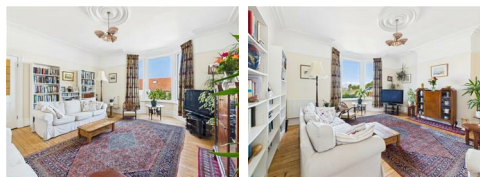
Original tiled floor, stained glass door to the hallway.

Hallway



Stairs to the first floor, original cornice, dado rail, carpeted floor, radiator, door to the cellar.

Lounge



Double glazed bay window to the front with wonderful views over the bay, stripped pine flooring, picture rail, radiators, original cornice and large ceiling rose.

Games Room/Utility/Cloakroom



Double-glazed window to the rear, original cornice and ceiling rose, utility area with a range of fitted cupboards, stainless steel sink, plumbing for washing machine, cupboard with space for a dryer and storage space, serving hatch, laminate floor, radiator, door to the cloakroom with a wash hand basin, vinyl floor, W.C.

Dining Room



Double glazed window to the side and double glazed door to the garden, feature fireplace with inset multi fuel stove set on a tiled hearth, engineered hardwood floor, radiator, original built-in cupboards, coving and a picture rail.

Kitchen



Double glazed windows to side and rear, and a double glazed Velux window, a range of cabinets finished in a country cream with complementary work surfaces, offering ample storage space, composite sink, integrated

dishwasher, space for fridge/freezer, four ring Smeg gas hob and extractor hood, fan-assisted Smeg gas oven with an electric grill, tiled flooring, Worcester gas boiler, double glazed doors to the garden.

Cellar & Work Room

Double glazed window to the front, consumer unit and gas meter, power and light, rendered walls and adjoining work room.

First Floor Landing

Stairs to the second floor, dado rail, radiators, original coving.

Bedroom One/Sitting Room



Double-glazed bay window to the front with glorious views, over the bay, wood surround period fireplace with an open fire with a tiled hearth, picture rail, original cornice, stripped pine flooring, radiator.

Bedroom Two



Double-glazed window to the rear with views over the garden, wood surround fireplace with inset cast iron fire, picture rail, carpeted floor, radiator.

Bedroom Three



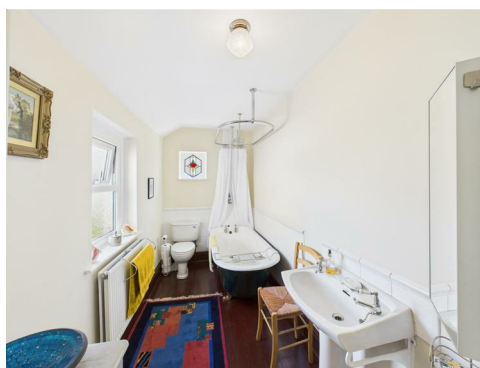
Double-glazed window to the side, wash hand basin, picture rail, carpeted floor, radiator.

Bedroom Four/Study



Currently used as a study with a double-glazed window to the front offering outstanding views over the sea, original cornice, picture rail, carpeted floor, radiator.

Family Bathroom



Double-glazed window to the side and rear, cast iron claw-foot bath

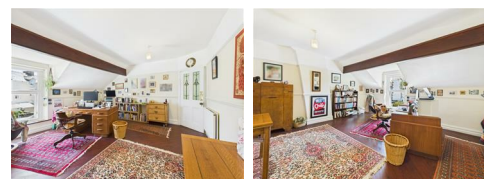
with thermostatic shower, painted wood floor, wash hand basin, radiator, access to the loft, W.C.

Second Floor Landing



Double-glazed ornate Velux window, access to the main roof with a pull down loft ladder, built-in storage cupboards, dado rail, access to the shower room.

Bedroom Five/Home Office



Double-glazed window to the rear, dado rail, radiators, picture rail, solid timber overlay flooring.

Bedroom Six



Double-glazed window to the front with breathtaking views over the bay and beyond, painted wood floor, radiator, picture rail, door to the en-suite.

En-Suite Shower Room



Double-glazed window with glorious views over the bay, shower cubicle with thermostatic shower, wash hand basin, vinyl floor, radiator, separate door to the hallway, allowing it to be used as a private guest suite if desired, W.C.

Outside

A charming cottage garden welcomes you at the front, complete with a lovely seating area where you can sit back and take in the stunning views. Convenient off-road parking and a gated path lead to the rear garden.

To the rear, you'll find a fully enclosed and beautifully landscaped garden that has been planted to reflect the seasons. Raised flower beds burst with vibrant colour, and a decked patio area offers the perfect spot for morning coffee or evening relaxation. There's also a neat lawn, a flagged patio area, a handy wood store, an outdoor electric power point, and a water tap for easy gardening.

This outdoor space is truly a gardener's dream, peaceful, picturesque, and bursting with seasonal charm and an absolute delight to enjoy all year round.

Useful Information

Tenure Freehold

Council Tax Band (D) £2,408

Total EPC Floor Area 280 square metres

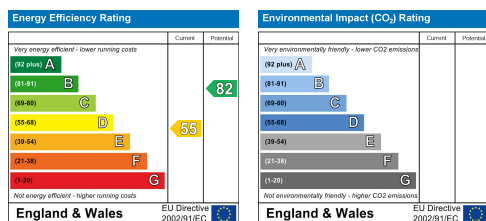
Boiler 6 years old with a ten-year warranty.

Circa understood to date from the 1890's

The outstanding views from this

location have inspired artists for generations, most notably captured by the famous painter J.M.W. Turner. More recently, the area's striking scenery has also featured in the popular television series The Bay, highlighting its timeless charm and coastal appeal.

A highly versatile family home, currently arranged to suit modern living. Although offering six bedrooms, the owners have chosen to use Bedroom One as an additional sitting room and Bedroom Four as a home office, both enjoying glorious, far-reaching views across the bay."



Head Office: 83 Bowerham Road Lancaster LA1 4AQ

T 01524 548888 E enquiries@mightyhouse.co.uk W www.mightyhouse.co.uk



the mark
of property
professionalism
worldwide

Mighty House is a trading name of P&PC Surveyors Limited. Registered Office: 70 Daisy Hill, Dewsbury, WF13 1LS. Company no: 06498054



Floor -1



Ground Floor



Floor 1



Floor 2

Approximate total area⁽¹⁾
3013 ft²
280 m²

Reduced headroom
12 ft²
1.1 m²

(1) Excluding balconies and terraces.

Reduced headroom
Below 5 ft/1.5 m

Calculations reference the RICS IPMS 3C standard. Measurements are approximate and not to scale. This floor plan is intended for illustration only.

GIRAFFE360